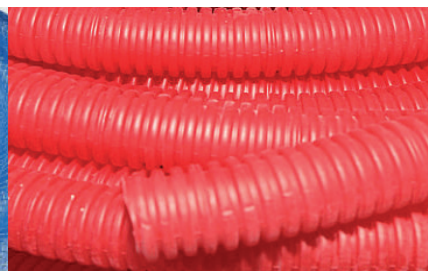




Industrial hoses



RUBBER HOSES FOR WELDING, CUTTING AND ALLIED PROCESSES

ISO 3821

Oxygen



↔		↔		🕒		📏		🏺	
mm	inch	mm	inch	bar	psi	mm	inch	kg/m	lb/ft
6	1/4	13	0,51	20	300	60	2,50	0,150	0,100
8	5/16	15	0,59	20	300	80	3,00	0,180	0,120
10	3/8	17	0,67	20	300	100	4,00	0,210	0,140

CONSTRUCTION:

Tube: Black SBR
 Reinforcement: High tensile textile cords
 Cover: Blue SBR/EPDM - abrasion and ozone resistant

APPLICATIONS:

Use: Oxygen welding
 Safety factor: 3:1
 Temperature range: -25°C +80°C (-13°F +176°F)

ISO 3821

Acetylene welding



↔		↔		🕒		📏		🏺	
mm	inch	mm	inch	bar	psi	mm	inch	kg/m	lb/ft
6	1/4	13	0,51	20	300	60	2,50	0,150	0,100
8	5/16	15	0,59	20	300	80	3,00	0,180	0,120
10	3/8	17	0,67	20	300	100	4,00	0,210	0,140

CONSTRUCTION:

Tube: Black SBR
 Reinforcement: High tensile textile cords
 Cover: Red SBR/EPDM - abrasion and ozone resistant

APPLICATIONS:

Use: Acetylene welding
 Safety factor: 3:1
 Temperature range: -25°C +80°C (-13°F +176°F)

ISO 3821

LPG welding



↔		↔		🕒		📏		🏺	
mm	inch	mm	inch	bar	psi	mm	inch	kg/m	lb/ft
6	1/4	13	0,51	20	300	60	2,50	0,150	0,100
8	5/16	15	0,59	20	300	80	3,00	0,180	0,120
10	3/8	17	0,67	20	300	100	4,00	0,210	0,140

CONSTRUCTION:

Tube: Black NBR
 Reinforcement: High tensile textile cords
 Cover: Orange SBR/EPDM - abrasion and ozone resistant

APPLICATIONS:

Use: LPG welding
 Safety factor: 3:1
 Temperature range: -30°C +80°C (-22°F +176°F)



ISO 3821

Oxygen/Acetylene twin welding



mm	inch	mm	inch	bar	psi	mm	inch	kg/m	lb/ft
6	1/4	13	0,51	20	300	60	2,50	0,300	0,200
6+9	1/4+23/64	16	0,63	20	300	100	3,50	0,420	0,285
8	5/16	15	0,59	20	300	80	3,00	0,360	0,245
10	3/8	17	0,67	20	300	100	4,00	0,420	0,285

CONSTRUCTION:

Tube: Black SBR

Reinforcement: High tensile textile cords

Cover: Blue, red SBR/EPDM - abrasion and ozone resistant

APPLICATIONS:

Use: Oxygen/Acetylene twin welding

Safety factor: 3:1

Temperature range: -25°C +80°C (-13°F +176°F)

ISO 3821

Oxygen/LPG twin welding



mm	inch	mm	inch	bar	psi	mm	inch	kg/m	lb/ft
8	5/16	15	0,59	20	300	80	3,00	0,360	0,245

CONSTRUCTION:

Tube: Black SBR

Reinforcement: High tensile textile cords

Cover: Blue, orange SBR/EPDM - abrasion and ozone resistant

APPLICATIONS:

Use: Oxygen/LPG twin welding

Safety factor: 3:1

Temperature range: -30°C +80°C (-22°F +176°F)

RUBBER HOSES FOR GENERAL AND SPECIFIC DELIVERY APPLICATIONS

AIR

Standard duty. 20 bar (300 psi)



mm	inch	mm	inch	bar	psi	mm	inch	kg/m	lb/ft
6	1/4	12	0,51	20	300	48	2,00	0,160	0,110
8	5/16	14	0,59	20	300	64	2,50	0,190	0,130
10	3/8	17	0,67	20	300	80	3,00	0,220	0,150
13	1/2	21	0,83	20	300	104	4,00	0,310	0,210
16	5/8	24	0,98	20	300	128	5,00	0,430	0,290
19	3/4	28	1,14	20	300	152	6,00	0,550	0,370
25	1	35	1,38	20	300	200	8,00	0,690	0,465

CONSTRUCTION:

Tube: Black SBR/NBR - oil mist resistant
 Reinforcement: High tensile textile cords
 Cover: Black SBR - abrasion and ozone resistant

APPLICATIONS:

Use: Compressed air and general industrial applications
 Safety factor: 3:1
 Temperature range: -25°C +80°C (-13°F +176°F)

AIR

Standard duty. 20 bar (300 psi)



mm	inch	mm	inch	bar	psi	mm	inch	kg/m	lb/ft
10	3/8	17	0,67	20	300	80	3,00	0,220	0,150
13	1/2	21	0,83	20	300	104	4,00	0,260	0,175
19	3/4	29	1,14	20	300	152	6,00	0,510	0,345
25	1	35	1,38	20	300	200	8,00	0,610	0,410

CONSTRUCTION:

Tube: Black SBR/NBR - oil mist resistant
 Reinforcement: High tensile textile cords
 Cover: Yellow SBR - abrasion and ozone resistant

APPLICATIONS:

Use: Compressed air and general industrial applications
 Safety factor: 3:1
 Temperature range: -25°C +80°C (-13°F +176°F)

FUEL-OIL

Heavy oil. 16 bar (240 psi)



mm	inch	mm	inch	bar	psi	mm	inch	kg/m	lb/ft
5	3/16	11	0,43	16	240	50	2,00	0,130	0,087
6	1/4	13	0,51	16	240	60	2,50	0,150	0,100
7	9/32	13	0,51	16	240	70	2,75	0,150	0,100
8	5/16	15	0,59	16	240	80	3,00	0,170	0,115
10	3/8	17	0,67	16	240	100	4,00	0,210	0,140
13	1/2	20	0,79	16	240	120	4,75	0,250	0,170
16	5/8	24	0,94	16	240	160	6,25	0,350	0,235
19	3/4	29	1,14	16	240	190	7,50	0,400	0,270
25	1	35	1,38	16	240	250	10,00	0,730	0,495

CONSTRUCTION:

Tube: Black NBR

Reinforcement: High tensile textile cords

Cover: Black synthetic rubber - abrasion, ozone and hydrocarbon resistant

APPLICATIONS:

Use: General purpose fuel and oil delivery

Safety factor: 3:1

Temperature range: -25°C +80°C (-13°F +176°F)

JACKHAMMER

Transfer air to pneumatic tools. 300 psi



mm	inch	mm	inch	bar	psi	mm	inch	kg/m	lb/ft
19	3/4	29	1,14	16	250	152	6,00	0,72	0,10
19	3/4	29	1,14	20,7	250	152	6,00	0,79	0,11
25	1	35	1,37	16	250	200	8,00	0,95	0,13

STRUCTURE

1. Common type: Interior lining + Strengthen lining + Exterior lining.

2. Strength type (three lining and two weaving fiber): Add middle rubber lining and a weaving fiber base on the common type.

Material: Inner tube is made of SBR; outer cover is made of SBR & EPDM

Color: Black, red, blue, green, yellow, white and grey

Temperature range: -25°C +70°C (-13°F +158°F)

Technical parameter: Anti - ozone aging, Heat - proof aging, etc.

GP(general purpose)

Standard duty. 20 bar (300 psi)



mm	inch	mm	inch	bar	psi	mm	inch	kg/m	lb/ft
6	1/4	13	0,51	20	300			0,130	0,087
8	5/16	15	0,59	20	300			0,160	0,110
10	3/8	17	0,67	20	300			0,190	0,130
13	1/2	21	0,83	20	300			0,270	0,180
16	5/8	25	0,98	20	300			0,360	0,245
19	3/4	29	1,14	20	300			0,460	0,310
25	1	35	1,38	20	300			0,580	0,390

CONSTRUCTION:

Tube: Black EPDM

Reinforcement: High tensile textile cords

Cover: Grey EPDM - abrasion and ozone resistant

APPLICATIONS:

Use: Air, water and mild chemicals delivery in general industrial applications

Safety factor: 3:1

Temperature range: -40°C +100°C (-40°F +212°F)

Not suitable for oil

AIR-WATER

Standard duty. 10 bar (150 psi)



mm	inch	mm	inch	bar	psi	mm	inch	kg/m	lb/ft
13	1/2	21	0,83	10	150			0,320	0,215
19	3/4	29	1,14	10	150			0,430	0,290
25	1	36	1,42	10	150			0,540	0,365
32	1 1/4	44	1,73	10	150			0,830	0,560
38	1 1/2	50	1,97	10	150			0,970	0,655
51	2	63	2,48	10	150			1,290	0,870
63	2 1/2	79	3,11	10	150			1,910	1,285
76	3	92	3,62	10	150			2,290	1,540
102	4	118	4,64	10	150			3,090	2,080
152	6	166	6,54	10	150			4,650	3,125

CONSTRUCTION:

Tube: Black SBR

Reinforcement: High tensile textile cords

Cover: Black SBR - abrasion and ozone resistant

APPLICATIONS:

Use: Air and water delivery

Safety factor: 3:1. 203mm, 2:1

Temperature range: -30°C +80°C (-22°F +176°F)

OIL-GASOLINE

Standard duty. 20 bar (300 psi)



TL		TL		TL		TL		TL	
mm	inch	mm	inch	bar	psi	mm	inch	kg/m	lb/ft
4,8	3/16	11,1	0,44	20	300	50	2,00	0,10	0,07
6,4	1/4	13	0,55	20	300	60	2,40	0,12	0,08
7,9	5/16	15	0,59	20	300	80	3,20	0,15	0,10
9,5	3/8	17	0,67	20	300	100	3,90	0,16	0,11
12,7	1/2	21	0,83	20	300	125	4,90	0,24	0,16
15,9	5/8	24	0,94	20	300	160	6,30	0,27	0,18
19,1	3/4	29	1,14	20	300	190	7,50	0,40	0,27
25,4	1	35	1,38	20	300	254	10,0	0,55	0,37
31,8	1 1/4	43,5	1,71	20	300	320	12,6	1,17	0,79
38,1	1 1/2	50,5	1,99	20	300	380	15,0	1,33	0,89
50,8	2	63,2	2,49	20	300	510	20,1	1,96	0,32

CONSTRUCTION:

Inner tube: Seamless oil, fuel and gasoline resistant synthetic rubber
 Reinforcement: 1 high resistance synthetic fiber braid
 Outer tube: Smooth surface from 3/16 "to 1", "1 1/4" and on wrapped surface, weather and abrasion resistant synthetic rubber

APPLICATIONS:

Oil, fuel and gasoline on automotive, and service stations
 Safety factor: 3:1
 Temperature range: -40°C +100°C (-40°F +212°F)

EN 1762 D-M (LPG)

25 bar (375 psi). Liquefied petroleum gas. Pin pricked



TL		TL		TL		TL		TL	
mm	inch	mm	inch	bar	psi	mm	inch	kg/m	lb/ft
19	3/4	31	1,22	25	375	160	6,25	0,630	0,425
25	1	38	1,50	25	375	200	8,00	0,810	0,545
32	1 1/4	45	1,77	25	375	250	10,00	0,950	0,640
38	1 1/2	52	2,05	25	375	320	12,50	1,350	0,910
51	2	67	2,64	25	375	400	16,00	2,030	1,365

CONSTRUCTION:

Tube: Black SBR
 Reinforcement: High tensile textile braids - antistatic wire
 Cover: Black CR - abrasion, ozone, hydrocarbon and fire resistant - pin pricked

APPLICATIONS:

Use: LPG delivery in heavy duty reeling applications
 Safety factor: 4:1
 Temperature range: -30°C +70°C (-22°F +158°F)

STEAM

Temperature up to 165°C



mm	inch	mm	inch	bar	psi	mm	inch	kg/m	lb/ft
9,5	3/8	17,0	0,67	7	102	68	2,68	0,33	0,22
12,7	1/2	22,0	0,87	7	102	80	3,15	0,39	0,26
19,0	3/4	32,0	1,26	7	102	135	5,31	0,67	0,45
25,4	1	38,0	1,50	7	102	170	6,69	0,83	0,56
31,8	1 1/4	45,0	1,77	7	102	240	9,45	1,10	0,74
38,1	1 1/2	51,0	2,01	7	102	300	11,81	1,27	0,85
50,8	2	66,0	2,60	7	102	375	14,76	1,83	1,23

CONSTRUCTION:

Inner tube: Black, heat resistance synthetic rubber

Reinforcement: Steel wire spiral

Outer tube: Wrapped, weather and abrasion resistant synthetic rubber

APPLICATIONS:

For general saturated steam services.

Safety factor: 10:1

Temperature range: -40°C +165°C (-40°F +330°F)

WATER

Water discharge 10 bar (150 psi). Lay flat



mm	inch	mm	inch	bar	psi	mm	inch	kg/m	lb/ft
32	1 1/4	43	1,69	10	150			0,460	0,310
38	1 1/2	49	1,93	10	150			0,540	0,365
40	1 9/16	51	2	10	150			0,570	0,385
45	1 3/4	57	2,24	10	150			0,660	0,445
51	2	62	2,44	10	150			0,730	0,495
60	2 3/8	71	2,79	10	150			0,860	0,580
63	2 1/2	74,5	2,93	10	150			0,890	0,600
70	2 3/4	81	3,24	10	150			1,190	0,800
76	3	87	3,42	10	150			1,280	0,865
90	3 1/2	101	3,97	10	150			1,480	0,995
102	4	115	4,53	10	150			1,770	1,190
127	5	142	5,59	10	150			2,400	1,615
152	6	168,5	6,63	10	150			2,970	2,000

CONSTRUCTION:

Tube: Black EPDM

Reinforcement: High tensile textile cords

Cover: Black EPDM - abrasion and ozone resistant

APPLICATIONS:

Use: Lay flat water discharge

Safety factor: 3:1. >= 203mm 2:1

Temperature range: -30°C +80°C (-22°F +176°F)

SANDBLAST

10 bar (150 psi). Abrasive material blasting



mm	inch	mm	inch	bar	psi	mm	inch	kg/m	lb/ft
19	3/4	33	1,30	10	150			0,710	0,480
19	3/4	35	1,38	10	150			0,830	0,560
25	1	40	1,57	10	150			0,870	0,585
32	1 1/4	48	1,89	10	150			1,240	0,835
38	1 1/2	55	2,17	10	150			1,650	1,110
40	1 9/16	60	2,36	10	150			1,930	1,300
51	2	71	2,80	10	150			2,400	1,615
19	3/4	38	1,50	10	150			1,000	0,675
25	1	48	1,89	10	150			1,540	1,035
32	1 1/4	55	2,17	10	150			1,830	1,230
38	1 1/2	60	2,36	10	150			2,080	1,400
51	2	73	2,87	10	150			2,630	1,770

CONSTRUCTION:

Tube: Black conductive NR - abrasion resistant
 Reinforcement: High tensile textile cords
 Cover: Black conductive SBR/NR - abrasion and ozone resistant - pin pricked

APPLICATIONS:

Use: Abrasive material blasting
 Safety factor: 3:1
 Temperature range: -30°C +80°C (-22°F +176°F)

GP (general purpose)

Standard duty. 10 bar (150 psi)



mm	inch	mm	inch	bar	psi	mm	inch	kg/m	lb/ft
25	1	36	1,42	10	150	100	4,00	0,690	0,465
30	1 3/16	40	1,57	10	150	120	4,75	0,780	0,525
32	1 1/4	43	1,69	10	150	128	5,00	0,820	0,555
38	1 1/2	49	1,93	10	150	152	6,00	0,950	0,640
45	1 3/4	57	2,24	10	150	180	7,00	1,110	0,750
51	2	63	2,48	10	150	204	8,00	1,240	0,835
60	2 3/8	73,5	2,89	10	150	240	9,50	1,710	1,150
63	2 1/2	76,5	3,01	10	150	252	10,00	1,780	1,200
70	2 3/4	83	3,27	10	150	280	11,00	1,990	1,340
76	3	89	3,50	10	150	304	12,00	2,140	1,440
90	3 1/2	103,5	4,07	10	150	360	14,00	2,700	1,815
102	4	116	4,57	10	150	408	16,00	3,010	2,025
115	4 1/2	131,5	5,18	10	150	460	18,00	3,340	2,245
127	5	145	5,70	10	150	635	25,00	4,730	3,180
152	6	171	6,73	10	150	760	30,00	5,960	4,010

CONSTRUCTION:

Tube: Black EPDM
 Reinforcement: High tensile textile cords with embedded steel helix wire
 Cover: Black EPDM - abrasion and ozone resistant

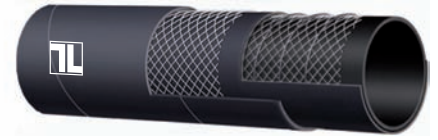
APPLICATIONS:

Use: Water suction and delivery. Also suitable for mild chemicals and fertilizers in general industrial and agricultural applications
 Safety factor: <= 127mm 3:1 >=152mm 2,5:1
 Temperature range: -30°C +80°C (-22°F +176°F)



FUEL-OIL

Heavy oil. 29 bar (300 psi)



↔		↔		🕒		📏		🏺	
mm	inch	mm	inch	bar	psi	mm	inch	kg/m	lb/ft
51	2	64	2,52	20	300	204	8,00	1,640	1,105
63	2 1/2	77	3,03	20	300	252	10,00	2,160	1,455
76	3	92	3,62	20	300	304	12,00	2,640	1,775
102	4	120	4,72	20	300	408	16,00	3,610	2,430
127	5	146	5,75	20	300	508	20,00	6,080	4,090
152	6	172	6,77	20	300	608	24,00	8,320	5,595

CONSTRUCTION:

Tube: Black conductive NBR

Reinforcement: High tensile textile cords with embedded steel helix wire-antistatic wire

Cover: Black CR - abrasion, ozone, hydrocarbon resistant

APPLICATIONS:

Use: Fuel and oil suction and delivery. Designed for long service life in heavy duty applications

Safety factor: 3:1

Temperature range: -30°C +80°C (-22°F +176°F)

SAE J1402 Air Brake

GB16897-2010. Pressure transmission for brake system



SIZE	DN	I.D	O.D	W.P	B.P
1/4"	6	6	15	11	80
3/8"	10	10	19	11	80
1/2"	13	13	22	11	80
1/2"	13	13	24	11	80
5/8"	16	16	27	11	80

APPLICATIONS:

Standard: GB16897-2010 SAE J1402

Product usage: Act as pressure transmission for auto barometric pressure brake system

Features: The hose are braided with high-quality, long-staple, manifold, cotton threads, and have such very good performances as the following, good flexibility busting resistance, high tensile strength, low extensibility under pressure, ozone resistance, low-temperature, resistance and good high-temperature resistance, with stable, safe and reliable braking effects.

Temperature range: -40°C +100°C (-40°F +212°F)



Bearings | **Hydraulics** | Power Transmission

www.translinkpt.com